



Soffit & Porch Ceiling

VARIFORM[®]
by  Ply Gem



Sustainable Building, Responsible Living

We're committed to reducing our impact on the environment and providing products that help ensure a sustainable future.

Sustainable Resources

- Vinyl products made from abundant natural resources²
- Minimal construction site waste
- Aluminum products contain over 80% recycled content
- Ply Gem facilities reuse and recycle

Energy Efficiency

- Vinyl siding requires less energy to manufacture than brick³
- National distribution network reduces energy use and emissions
- Variform insulated siding increases a home's energy efficiency

Lifecycle Benefits

- Variform vinyl siding is durable and requires no site finish
- Vinyl siding should never require painting or staining
- All of our aluminum accessories are easily recyclable

*Tested in accordance with ASTM D5206. Windspeed rating will vary depending on specific code region and construction method. Refer to local building codes for detailed requirements concerning allowable wind loads and specified conversion tables for actual windspeed.

**Example wind velocity for 55.6 PSF is 150 MPH Zone B @ 30' building height

² "A Dozen Things You Might Not Know That Make Vinyl Siding Green," page 9, Tad Radzinski, P.E., LEED AP, and VSI. October 10, 2009. <<http://vinylsiding.org/greenpaper/>>

³Ibid, page 10.

This is
where
your **life**
takes place



Perfect Detailing, Every Time

Variform Vinyl and Aluminum Soffit adds dynamic definition and attractive protection for porches, covered decks, eaves, overhangs and porte-cochere applications. Soffit is functional and attractive. Ours is offered in a variety of venting options, grades and styles, each designed to help circulate air and prevent moisture buildup.

Adding the perfect finishing touch to brick, stone, stucco or sided exteriors, Variform Vinyl and Aluminum Soffit is available in a beautiful array of styles and colors. It is perfect for traditional and vertical design applications. Constructed of the highest quality materials with a durable, virtually maintenance-free finish, Variform Soffit makes it easy to protect and beautify any building—no scraping, painting or hassle required.

VINYL SOFFIT & PORCH CEILING

TRIVENT® HIGH PERFORMANCE SOFFIT

OUR BEST SOFFIT OFFERING SUPERIOR HOME VENTILATION

- Available in Solid and Hidden Vent Styles
- Trivent X-Tra Vent® Soffit with hidden venting offers up to 50% more ventilation than most standard vinyl soffits, providing 9.19 sq/in per sq/ft, and is less likely to attract unsightly dirt
- .044" panel thickness for rigidity and dent resistance
- 5/8" panel projection for deep shadow lines
- Attractive triple 1/3" profile
- Solid suitable for vertical applications
- Matte finish mimics the look of smooth, painted wood

BEADED SOFFIT AND PORCH CEILING

- Available in Solid and Hidden Vent Styles
- .040" panel thickness
- Beautiful matte finish
- Classic beaded appearance adds drama to any application; ideal for soffit and porch ceilings
- Hidden Vent allows for 2.66 sq/in per sq/ft of ventilation

T4 SOFFIT

- Three panel styles—Solid, Center Vent and Full Vent Styles, all with matte finish
- .038" panel thickness
- Full Vent allows for 5.867 sq/in per sq/ft of ventilation
- Center Vent allows for 1.96 sq/in per sq/ft of ventilation

D5 PREMIUM SOFFIT

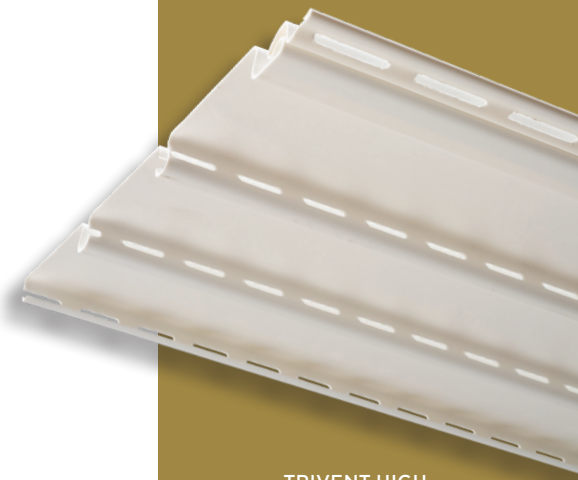
- Available in Solid and Full Vent Styles
- .044" panel thickness for rigidity and dent resistance
- Deep, wood grain finish
- Solid panels are ideal for vertical applications
- Vented panels allow for 6.2 sq/in per sq/ft of ventilation

D5 STANDARD SOFFIT

- Available in Solid and Full Vent Styles
- .040" panel thickness
- Deep, wood grain finish
- Vented panels allow for 6.2 sq/in per sq/ft of ventilation

TRIVENT®	BEADED	T4	D5 PREMIUM	D5 STANDARD	COLORS
STANDARD COLORS					
●		●	●	●	Autumn Beige
●		●	●	●	Classic Cream
●	●	●	●	●	Dover White**
●		●	●	●	Georgian Gray
●	●		●	●	Heritage Linen
●	●	●	●	●	Island Pearl
●	●	●	●	●	Natural Almond**
●	●	●	●		Rich Mocha
●		●	●	●	Sandtone
●	●	●	●	●	Sandy Tan**
	●	●	●		Savannah Blue
●		●	●	●	Silver Mist
		●	●	●	Spanish Olive
DARK COLORS					
●		●	●	●	Flint
		●	●		Irish Thistle
●		●			Musket Brown* **
●	●	●	●	●	Stone Mountain Clay**
		●			Black* **
PREMIUM DARK COLORS					
●					Bayou
●					Briarwood
●					Mediterranean Palm
●					Pewter
●					Sagebrook
●					Sedona Red
●					Teak
●					Twilight Shadow
●					Wedgewood

*Musket Brown and Black are not approved for use as vertical siding.
 **Available in T4 Soffit Center Vent.



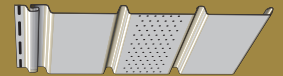
TRIVENT HIGH PERFORMANCE SOFFIT WITH X-TRA VENT®



BEADED SOFFIT - SOLID



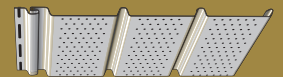
BEADED SOFFIT - HIDDEN VENT



T4 CENTER VENT



T4 SOLID



T4 FULL VENT



D5 SOFFIT - VENT



D5 SOFFIT - SOLID

ALUMINUM SOFFIT

COMMERCIAL T4 SOFFIT

- Available in Solid, Center Vent and Full Vent Styles
- .019" Thickness
- Center Vent offers 4.4 sq/in per sq/ft of ventilation
- Full Vent offers 13.2 sq/in per sq/ft of ventilation

DURABUILT® T4 SOFFIT

- Available in Solid, Center Vent and Full Vent Styles
- .016" Thickness
- Center Vent offers 4.4 sq/in per sq/ft of ventilation
- Full Vent offers 13.2 sq/in per sq/ft of ventilation

.013" T4 ALUMINUM SOFFIT

- Available in Solid, Center Vent and Full Vent Styles
- Center Vent offers 4.4 sq/in per sq/ft of ventilation
- .013" Thickness
- Available in Dover White only

COMMERCIAL QUAD 4 SOFFIT

- Available in Solid and Center Vent Styles
- .019" Thickness
- Center Vent offers 9.7 sq/in per sq/ft of ventilation

COMMERCIAL D6 SOFFIT

- Available in Solid and Full Vent Styles
- .019" Thickness
- Center Vent offers 11.9 sq/in per sq/ft of ventilation

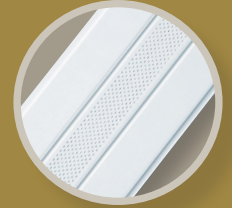
DURABUILT® D6 SOFFIT

- Available in Solid and Full Vent Styles
- .015" Thickness
- Full Vent offers 11.0 sq/in per sq/ft of ventilation

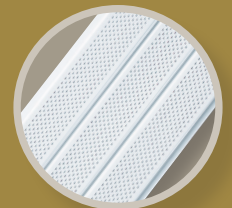
COMMERCIAL T4	DURABUILT® T4	.013" T4	COMMERCIAL QUAD 4	COMMERCIAL D6	DURABUILT® D6	COLORS
●	●		●			Autumn Beige
●	●		●			Black
●	●		●			Briarwood
●	●		●			Classic Cream
●	●		●			Dark Bronze
●	●	●	●	●	●	Dover White
●	●		●			Flint
●	●		●			Forest
●	●		●	●	●	Georgian Gray
●	●			●	●	Heritage Linen
●						Irish Thistle
●	●		●			Island Pearl
●	●		●	●	●	Musket Brown
●	●		●	●	●	Natural Almond
●	●		●			Norwegian Wood
●						Spanish Olive
●	●		●			Rich Mocha
●	●		●	●	●	Royal Brown
●	●		●			Sandtone
●	●		●	●	●	Sandy Tan
			●			Scotch Pine
●	●		●			Sedona Red
●	●		●			Silver Mist
●	●		●	●	●	Stone Mountain Clay
●	●		●			Teak
●	●		●	●	●	Terratone



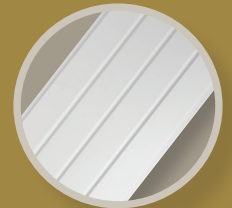
T4 SOLID SOFFIT



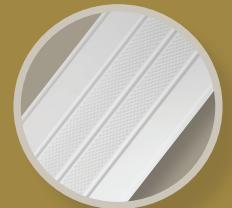
T4 CENTER VENT SOFFIT



T4 FULL VENT SOFFIT



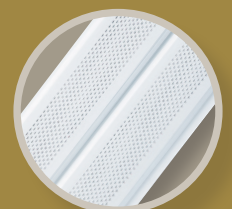
QUAD 4 SOLID SOFFIT



QUAD 4 CENTER VENT SOFFIT



D6 SOLID SOFFIT



D6 FULL VENT SOFFIT

VARIFORM[®]

by Ply Gem

Details, details, details.

The Variform brand has all the accessories and details you need to complete your project, including corners, trim, guttering, soffits, door surrounds and fascia. The Variform brand is endorsed by Ply Gem, a division of Cornerstone Building Brands, the nation's leading exterior building products company. As a result, we can provide you with a wide range of enhancements that complement Variform products – Ply Gem Gutter Protection, Ply Gem Trim and Mouldings, and Ply Gem Shutters and Accents. They all work together so that you can have worry-free maintenance and beauty down to the last detail.

Visit variform.com to design your dream home.



Vinyl Siding and Accent Panels



Ply Gem Gutter Protection



Rainware, Fascia, Soffit



Ply Gem Fence and Railing



Ply Gem Trim and Mouldings



Ply Gem Shutters and Accents

2600 Grand Blvd., Suite 900, Kansas City, MO 64108
(888) 9PLYGEM | variform.com



*Consult the VSI Website at vinylsiding.org for current list of certified products and colors. Cornerstone Building Brands reserves the right to alter, modify or delete items from time to time without notice. Due to printing limitations, colors may not be exactly as shown. Contact your sales representative for actual product and color samples. Variform, the Variform logo, and Trivent X-Tra Vent are trademarks of Variform, Inc.
© 2022 Variform, part of **Cornerstone Building Brands**, Inc. ALL RIGHTS RESERVED.
3307200701101/RevA/MS/CG/1122