

## It's all about the Clip

ClipStone's innovative clip design makes installation simple opening up unlimited ways to transform indoor or outdoor spaces. Another big plus? No mortar means less mess.

### Patented Mounting Clips

Mounting clips are embedded within each ClipStone piece so you can simply and securely install onto the wall.



### Easy Installation

No masonry skills required. Installs with screws and common, easy to use tools.



### Water Management System

Each ClipStone is automatically raised off the wall to create a built-in drainage plane that allows the wall to breathe in exterior applications.

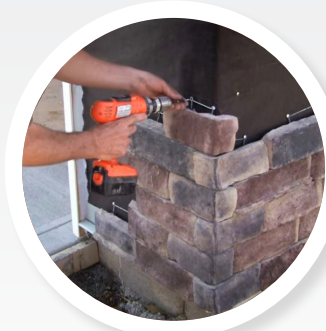


## Why ClipStone

- Work out of your existing toolbox. Contractors and remodelers can transition from siding to stone without changing your crew, your tools, or your schedule.
- ClipStone's mechanical fasteners also mean there's no mortar needed, so it can be installed in cold weather conditions without precautions - unlike traditional mortared applications.
- Every contractor knows time is money. ClipStone lets you add stone veneer in a fraction of the time of installing mortared stone.
- Since no mortar is needed to install ClipStone, there is little mess to clean up once your project is completed.
- Made in the USA.



# CLIPSTONE®



Easy To Install



Maintenance Free



Simply Beautiful



Durable by Design

# CLIPSTONE®

Mortarless Stone Veneer  
It's That Easy!™



[myclipstone.com](https://myclipstone.com)



© 2023 Environmental Materials, LLC.  
Part of the Cornerstone Building Brands family.  
Lit Item #ESW-432 10/2023

7803225161101

# Colors + Styles



Choose from the LedgeStone or ProStack style in a color that is sure to add warmth and beauty to any home, or even mix and match styles to create a custom look.

Update home exteriors, basement bars, accent walls, fireplaces and more.

### LedgeStone Sizes

- LedgeStone flats: 4" tall pieces with lengths from 6" up to 17"
- LedgeStone corner pieces: 8"-10" lengths

### ProStack Sizes

- ProStack flats: 4" tall pieces with lengths from 8" up to 16"
- ProStack corner pieces: 8"-12" lengths



See all the ClipStone Styles & Products at [myclipstone.com](http://myclipstone.com)



## CLIPSTONE® ColumnWrap

The perfect solution for beautiful columns and caps

- Simple and easy to install around an existing post
- No mortar needed
- 3' Column installs in as little as 30 minutes
- Available in 2 textures and 9 colors to fit every style



### CapStones



Full 18" x 18" Flat and Peaked CapStones



4", 6" and 8" Flat and Peaked Split CapStones

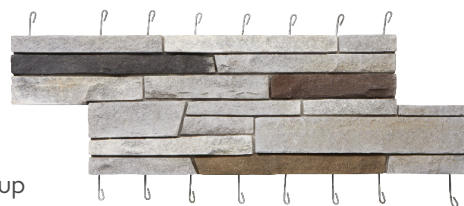
Download detailed installation instructions



## CLIPSTONE® ProPanel

ClipStone's large format panel product, ideal for more substantial residential and commercial projects.

- No seasonal restrictions on installation
- Work out of your existing toolbox
- Easy jobsite cleanup



Mystic NorthernLedge    Niagara NorthernLedge    Osceola NorthernLedge    Shenandoah NorthernLedge

## CLIPSTONE® Accessories

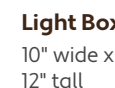
Complete your project by installing these available accessories.



**Drip Sill**  
20" long x 2.25" back height x 3" depth



**Electric Outlet Box**  
6" wide x 8" tall



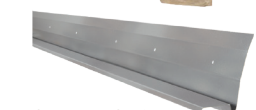
**Light Box**  
10" wide x 12" tall



**Drip Ledge Corners**  
8" x 8" in leg length, 2.25" back height x 3" depth



**Universal Trim**  
12" tall



**Starter Strips**  
5' Strips

Color options

All examples above shown in cream.

Visit [myclipstone.com](http://myclipstone.com) for complete line of accessories.